

# ARABIAN RANCHES III

---

BLISS 2

FLOOR PLANS



# EMAAR

# ARABIAN RANCHES III

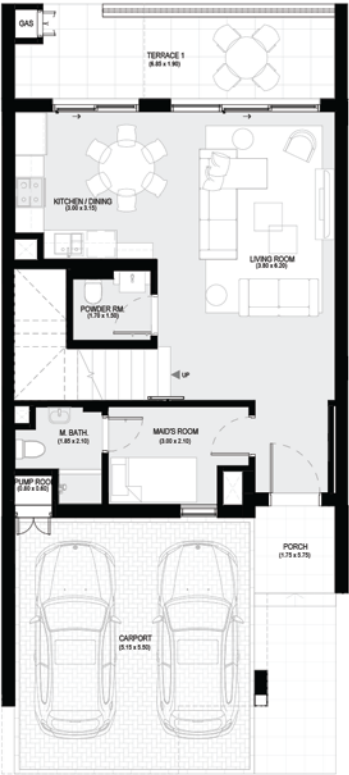
BLISS 2

MODERN

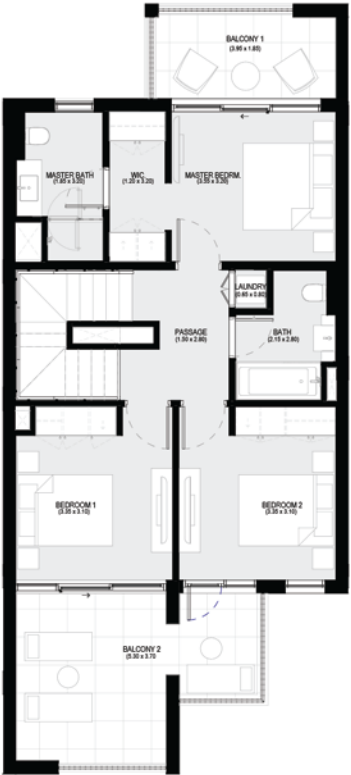
## 3 BEDROOM DUPLEX 1 - Middle

UNIT	TOTAL AREA	
21, 22, 66, 67, 79, 80, 106, 107, 112, 113, 121, 122, 158, 161, 162, 183, 184, 187, 190, 191, 205, 206, 210, 211, 240, 241, 245, 246, 260, 261	204.50 SQ.M.	2201.21 SQ.FT.

KEY PLAN



GROUND FLOOR PLAN



FIRST FLOOR PLAN

Disclaimer : All dimensions are in imperial and metric, and measured from finish to finish excluding construction tolerances. 2. All materials, dimensions, and drawings are approximate only. 3. Information is subject to change without notice, at developer's absolute discretion. 4. Actual area may vary from the stated area. 5. Drawings not to scale. 6. All images used are for illustrative purposes only and do not represent the actual size, features, specifications, fittings, and furnishings. 7. The developer reserves the right to make revisions / alterations, at it's absolute discretion, without any liability whatsoever.

# ARABIAN RANCHES III

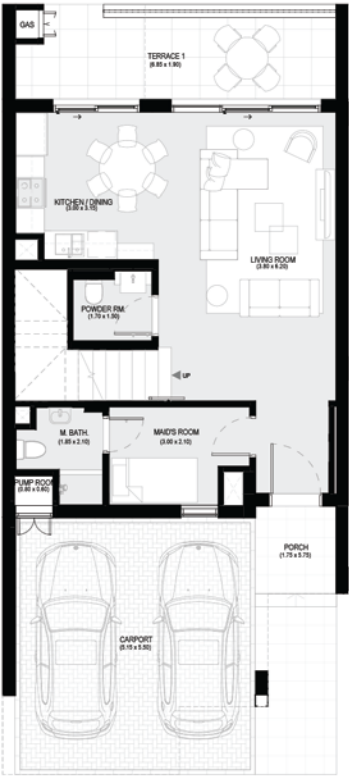
BLISS 2

MODERN

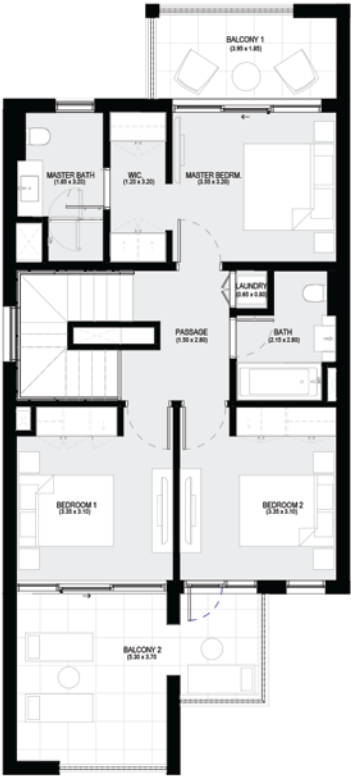
## 3 BEDROOM DUPLEX 1 - End 1

UNIT	TOTAL AREA	
20, 68, 81, 114, 189, 209, 242	208.56 SQ.M.	2244.92 SQ.FT.

KEY PLAN



GROUND FLOOR PLAN



FIRST FLOOR PLAN

Disclaimer : All dimensions are in imperial and metric, and measured from finish to finish excluding construction tolerances. 2. All materials, dimensions, and drawings are approximate only. 3. Information is subject to change without notice, at developer's absolute discretion. 4. Actual area may vary from the stated area. 5. Drawings not to scale. 6. All images used are for illustrative purposes only and do not represent the actual size, features, specifications, fittings, and furnishings. 7. The developer reserves the right to make revisions / alterations, at it's absolute discretion, without any liability whatsoever.

# ARABIAN RANCHES III

BLISS 2

MODERN

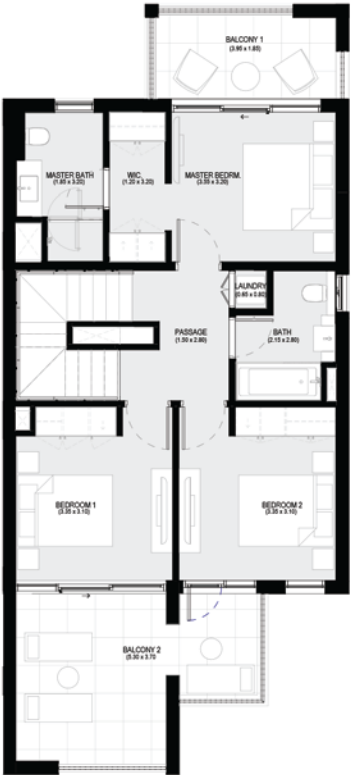
## 3 BEDROOM DUPLEX 1 - End 2

UNIT	TOTAL AREA	
157, 188	207.92 SQ.M.	2238.03 SQ.FT.

KEY PLAN



GROUND FLOOR PLAN



FIRST FLOOR PLAN

Disclaimer : All dimensions are in imperial and metric, and measured from finish to finish excluding construction tolerances. 2. All materials, dimensions, and drawings are approximate only. 3. Information is subject to change without notice, at developer's absolute discretion. 4. Actual area may vary from the stated area. 5. Drawings not to scale. 6. All images used are for illustrative purposes only and do not represent the actual size, features, specifications, fittings, and furnishings. 7. The developer reserves the right to make revisions / alterations, at it's absolute discretion, without any liability whatsoever.

# ARABIAN RANCHES III

BLISS 2

MODERN

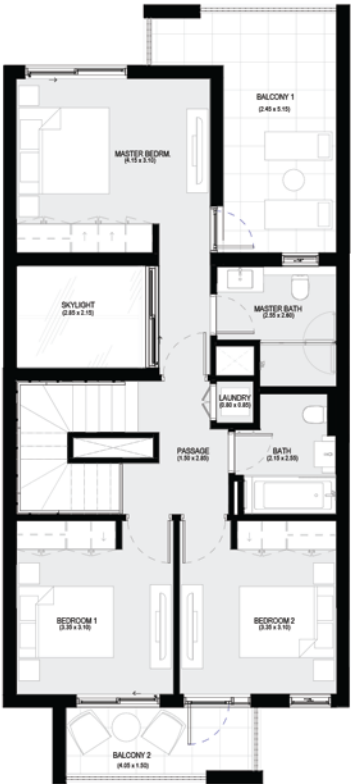
## 3 BEDROOM DUPLEX 2 - Middle

UNIT	TOTAL AREA	
12, 13, 23, 24, 27, 28, 31, 37, 38, 53, 54, 64, 65, 77, 78, 98, 99, 102, 105, 110, 111, 116, 117, 120, 135, 136, 159, 160, 170, 171, 185, 186, 192, 193, 207, 212, 213, 223, 224, 238, 239, 244, 262	214.84 SQ.M.	2312.52 SQ.FT.

KEY PLAN



GROUND FLOOR PLAN  
(SKYLIGHT PROVIDED ABOVE DINING SPACE)



FIRST FLOOR PLAN

Disclaimer : All dimensions are in imperial and metric, and measured from finish to finish excluding construction tolerances. 2. All materials, dimensions, and drawings are approximate only. 3. Information is subject to change without notice, at developer's absolute discretion. 4. Actual area may vary from the stated area. 5. Drawings not to scale. 6. All images used are for illustrative purposes only and do not represent the actual size, features, specifications, fittings, and furnishings. 7. The developer reserves the right to make revisions / alterations, at it's absolute discretion, without any liability whatsoever.

# ARABIAN RANCHES III

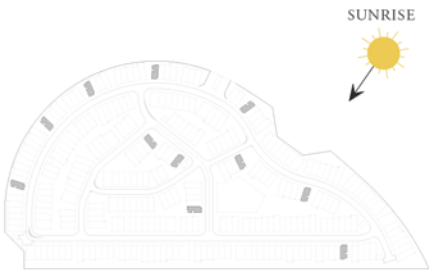
BLISS 2

MODERN

## 3 BEDROOM DUPLEX 2 - End 1

UNIT	TOTAL AREA	
14, 29, 39, 55, 104, 115, 119, 169, 208, 243, 263	218.04 SQ.M.	2346.96 SQ.FT.

KEY PLAN



GROUND FLOOR PLAN  
(SKYLIGHT PROVIDED ABOVE DINING SPACE)



FIRST FLOOR PLAN

Disclaimer : All dimensions are in imperial and metric, and measured from finish to finish excluding construction tolerances. 2. All materials, dimensions, and drawings are approximate only. 3. Information is subject to change without notice, at developer's absolute discretion. 4. Actual area may vary from the stated area. 5. Drawings not to scale. 6. All images used are for illustrative purposes only and do not represent the actual size, features, specifications, fittings, and furnishings. 7. The developer reserves the right to make revisions / alterations, at it's absolute discretion, without any liability whatsoever.

# ARABIAN RANCHES III

BLISS 2

MODERN

## 3 BEDROOM DUPLEX 2 - End 2

UNIT	TOTAL AREA
30, 32, 50, 51, 82, 83, 101, 103, 145, 146, 264, 265	218.91 SQ.M. 2356.33 SQ.FT.

KEY PLAN



GROUND FLOOR PLAN  
(SKYLIGHT PROVIDED ABOVE DINING SPACE)



FIRST FLOOR PLAN

Disclaimer : All dimensions are in imperial and metric, and measured from finish to finish excluding construction tolerances. 2. All materials, dimensions, and drawings are approximate only. 3. Information is subject to change without notice, at developer's absolute discretion. 4. Actual area may vary from the stated area. 5. Drawings not to scale. 6. All images used are for illustrative purposes only and do not represent the actual size, features, specifications, fittings, and furnishings. 7. The developer reserves the right to make revisions / alterations, at it's absolute discretion, without any liability whatsoever.

# ARABIAN RANCHES III

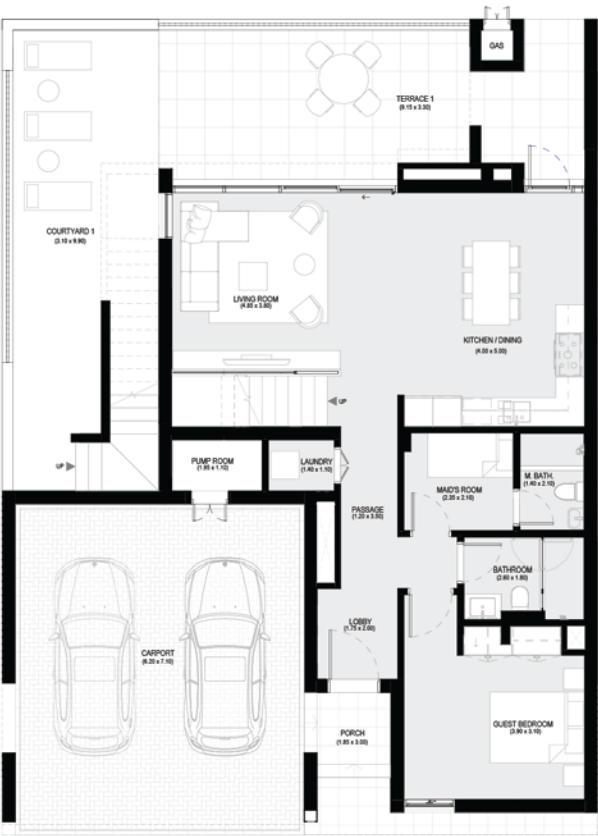
BLISS 2

MODERN

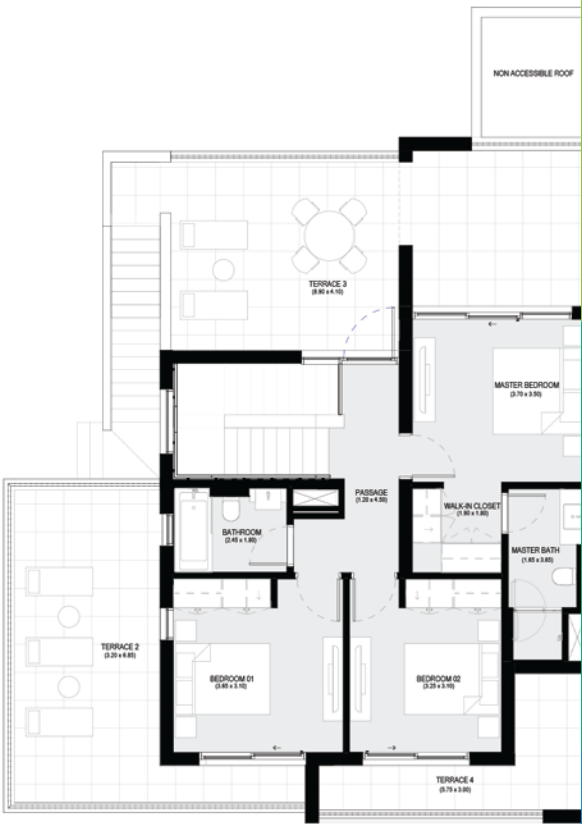
## 4 BEDROOM DUPLEX 1 - End 1

UNIT	TOTAL AREA	
100, 137, 225	317.69 SQ.M.	3419.59 SQ.FT.

KEY PLAN



GROUND FLOOR PLAN



FIRST FLOOR PLAN

Disclaimer : All dimensions are in imperial and metric, and measured from finish to finish excluding construction tolerances. 2. All materials, dimensions, and drawings are approximate only. 3. Information is subject to change without notice, at developer's absolute discretion. 4. Actual area may vary from the stated area. 5. Drawings not to scale. 6. All images used are for illustrative purposes only and do not represent the actual size, features, specifications, fittings, and furnishings. 7. The developer reserves the right to make revisions / alterations, at it's absolute discretion, without any liability whatsoever.

# ARABIAN RANCHES III

## BLISS 2

MODERN

### 4 BEDROOM DUPLEX 2 - End 1

UNIT	TOTAL AREA	
163, 182	267.78 SQ.M.	2882.36 SQ.FT.

KEY PLAN



GROUND FLOOR PLAN



FIRST FLOOR PLAN

Disclaimer : All dimensions are in imperial and metric, and measured from finish to finish excluding construction tolerances. 2. All materials, dimensions, and drawings are approximate only. 3. Information is subject to change without notice, at developer's absolute discretion. 4. Actual area may vary from the stated area. 5. Drawings not to scale. 6. All images used are for illustrative purposes only and do not represent the actual size, features, specifications, fittings, and furnishings. 7. The developer reserves the right to make revisions / alterations, at it's absolute discretion, without any liability whatsoever.

# ARABIAN RANCHES III

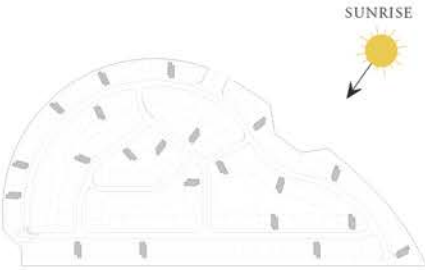
BLISS 2

MODERN

## 4 BEDROOM TRIPLEX - End 1

UNIT	TOTAL AREA	
11, 25, 26, 36, 52, 63, 76, 94, 108, 109, 118, 125, 131, 172, 194, 204, 214, 219, 237, 247, 259	284.21 SQ.M.	3059.21 SQ.FT.

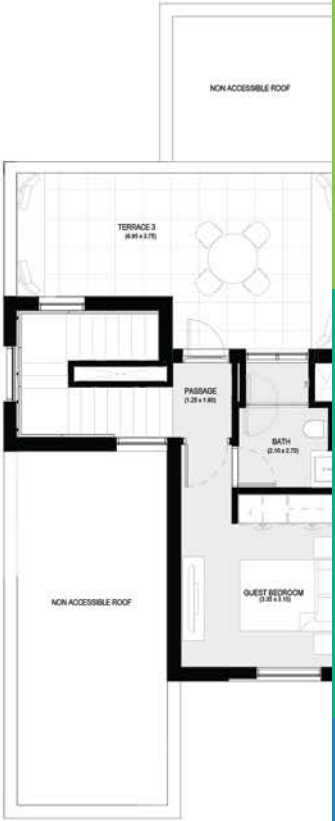
KEY PLAN



GROUND FLOOR PLAN



FIRST FLOOR PLAN



SECOND FLOOR PLAN

Disclaimer : All dimensions are in imperial and metric, and measured from finish to finish excluding construction tolerances. 2. All materials, dimensions, and drawings are approximate only. 3. Information is subject to change without notice, at developer's absolute discretion. 4. Actual area may vary from the stated area. 5. Drawings not to scale. 6. All images used are for illustrative purposes only and do not represent the actual size, features, specifications, fittings, and finishes. 7. The developer reserves the right to make any changes to the drawings without any liability.

# ARABIAN RANCHES III

BLISS 2

MODERN

## 4 BEDROOM TRIPLEX - Middle

UNIT	TOTAL AREA	
95, 96, 97, 132, 133, 134, 220, 221, 222,	278.98 SQ.M.	3002.92 SQ.FT.

KEY PLAN

SUNRISE



GROUND FLOOR PLAN



FIRST FLOOR PLAN



SECOND FLOOR PLAN

Disclaimer : All dimensions are in imperial and metric, and measured from finish to finish excluding construction tolerances. 2. All materials, dimensions, and drawings are approximate only. 3. Information is subject to change without notice, at developer's absolute discretion. 4. Actual area may vary from the stated area. 5. Drawings not to scale. 6. All images used are for illustrative purposes only and do not represent the actual size, features, specifications, fittings, and finishes. 7. The developer reserves the right to make any changes to the drawings without any liability.

EMAAR

# ARABIAN RANCHES III

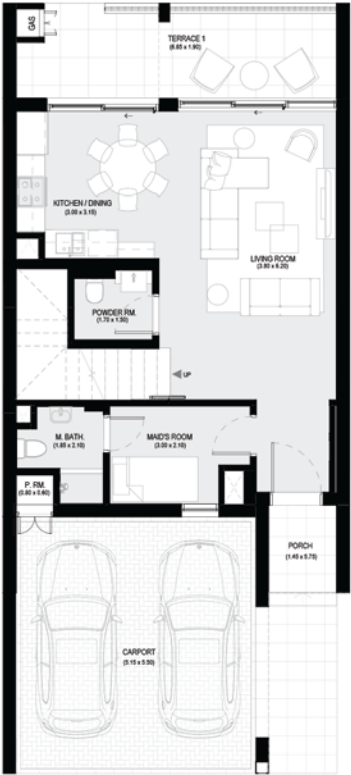
## BLISS 2

### CLASSIC

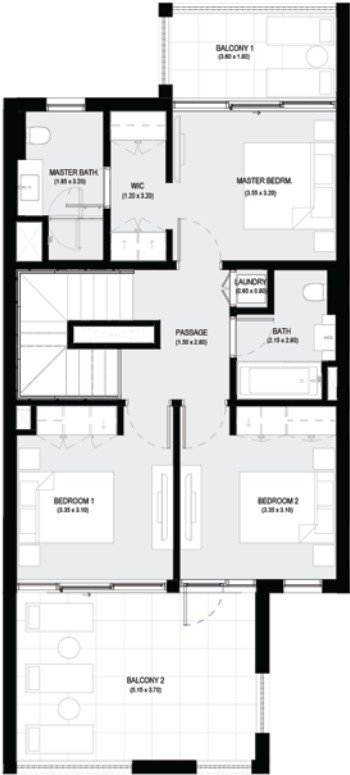
### 3 BEDROOM DUPLEX 1 - Middle

UNIT	TOTAL AREA	
5, 8, 9, 16, 17, 42, 43, 46, 47, 57, 60, 61, 70, 71, 74, 88, 91, 92, 151, 152, 155, 165, 166, 176, 177, 201, 202, 227, 228, 231, 249, 250, 253	209 SQ.M.	2249.66 SQ.FT.

KEY PLAN



GROUND FLOOR PLAN



FIRST FLOOR PLAN

Disclaimer : All dimensions are in imperial and metric, and measured from finish to finish excluding construction tolerances. 2. All materials, dimensions, and drawings are approximate only. 3. Information is subject to change without notice, at developer's absolute discretion. 4. Actual area may vary from the stated area. 5. Drawings not to scale. 6. All images used are for illustrative purposes only and do not represent the actual size, features, specifications, fittings, and furnishings. 7. The developer reserves the right to make revisions / alterations, at it's absolute discretion, without any liability whatsoever.

# ARABIAN RANCHES III

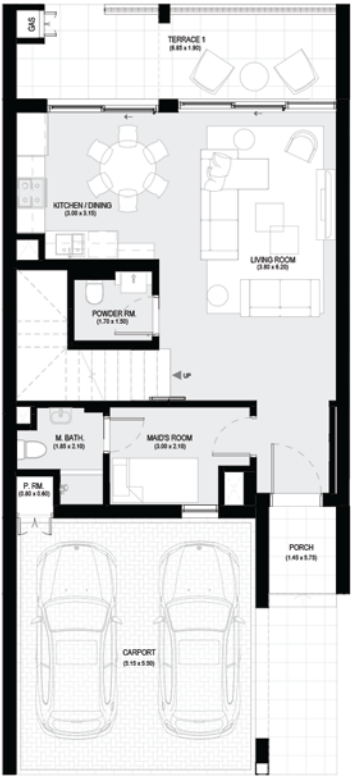
BLISS 2

CLASSIC

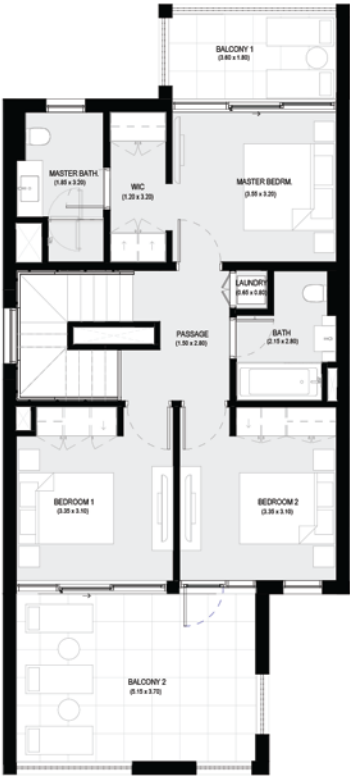
## 3 BEDROOM DUPLEX 1 - End 1

UNIT	TOTAL AREA	
178	213.05 SQ.M.	2293.25 SQ.FT.

KEY PLAN



GROUND FLOOR PLAN



FIRST FLOOR PLAN

Disclaimer : All dimensions are in imperial and metric, and measured from finish to finish excluding construction tolerances. 2. All materials, dimensions, and drawings are approximate only. 3. Information is subject to change without notice, at developer's absolute discretion. 4. Actual area may vary from the stated area. 5. Drawings not to scale. 6. All images used are for illustrative purposes only and do not represent the actual size, features, specifications, fittings, and furnishings. 7. The developer reserves the right to make revisions / alterations, at it's absolute discretion, without any liability whatsoever.

ARABIAN RANCHES III

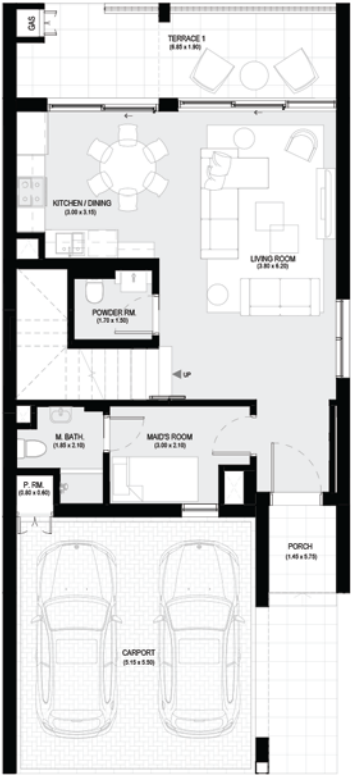
BLISS 2

CLASSIC

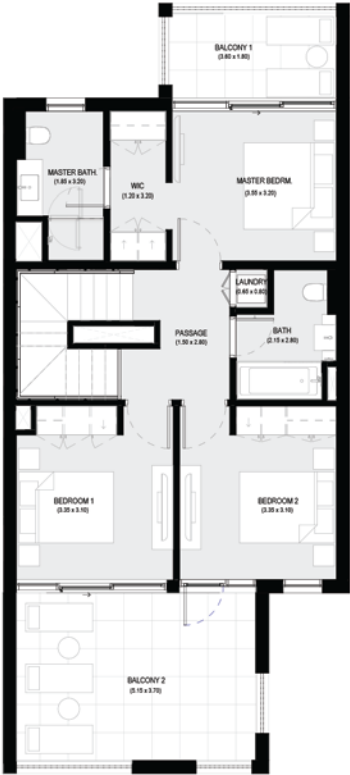
3 BEDROOM DUPLEX 1 - End 2

UNIT	TOTAL AREA	
4, 56, 75, 87, 156, 232, 254	212.54 SQ.M.	2287.76 SQ.FT.

KEY PLAN



GROUND FLOOR PLAN



FIRST FLOOR PLAN

Disclaimer : All dimensions are in imperial and metric, and measured from finish to finish excluding construction tolerances. 2. All materials, dimensions, and drawings are approximate only. 3. Information is subject to change without notice, at developer's absolute discretion. 4. Actual area may vary from the stated area. 5. Drawings not to scale. 6. All images used are for illustrative purposes only and do not represent the actual size, features, specifications, fittings, and furnishings. 7. The developer reserves the right to make revisions / alterations, at it's absolute discretion, without any liability whatsoever.

# ARABIAN RANCHES III

## BLISS 2

### CLASSIC

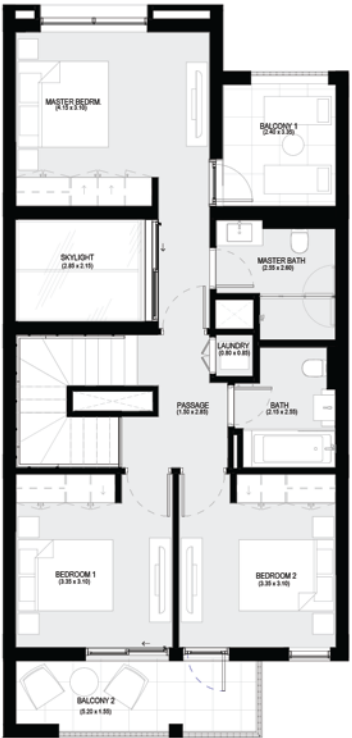
### 3 BEDROOM DUPLEX 2 - Middle

UNIT	TOTAL AREA	
2, 6, 7, 18, 34, 41, 48, 58, 59, 72, 73, 85, 89, 90, 125, 139, 140, 143, 148, 153, 154, 167, 174, 175, 180, 196, 197, 200, 216, 217, 229, 230, 234, 235, 251, 252, 256, 257	202.06 SQ.M.	2174.96 SQ.FT.

KEY PLAN



GROUND FLOOR PLAN  
(SKYLIGHT PROVIDED ABOVE DINING SPACE)



FIRST FLOOR PLAN

Disclaimer : All dimensions are in imperial and metric, and measured from finish to finish excluding construction tolerances. 2. All materials, dimensions, and drawings are approximate only. 3. Information is subject to change without notice, at developer's absolute discretion. 4. Actual area may vary from the stated area. 5. Drawings not to scale. 6. All images used are for illustrative purposes only and do not represent the actual size, features, specifications, fittings, and furnishings. 7. The developer reserves the right to make revisions / alterations, at it's absolute discretion, without any liability whatsoever.

# ARABIAN RANCHES III

BLISS 2

CLASSIC

## 3 BEDROOM DUPLEX 2 - End 1

UNIT	TOTAL AREA	
9, 40, 49, 138, 168, 198, 218, 235, 255	205.70 SQ.M.	2214.14 SQ.FT.

KEY PLAN



GROUND FLOOR PLAN  
(SKYLIGHT PROVIDED ABOVE DINING SPACE)



FIRST FLOOR PLAN

Disclaimer : All dimensions are in imperial and metric, and measured from finish to finish excluding construction tolerances. 2. All materials, dimensions, and drawings are approximate only. 3. Information is subject to change without notice, at developer's absolute discretion. 4. Actual area may vary from the stated area. 5. Drawings not to scale. 6. All images used are for illustrative purposes only and do not represent the actual size, features, specifications, fittings, and furnishings. 7. The developer reserves the right to make revisions / alterations, at it's absolute discretion, without any liability whatsoever.

# ARABIAN RANCHES III

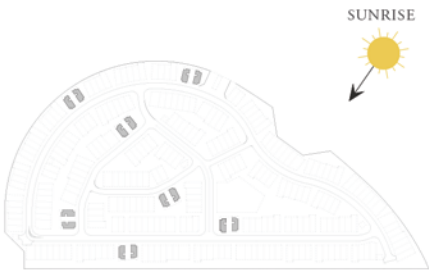
## BLISS 2

### CLASSIC

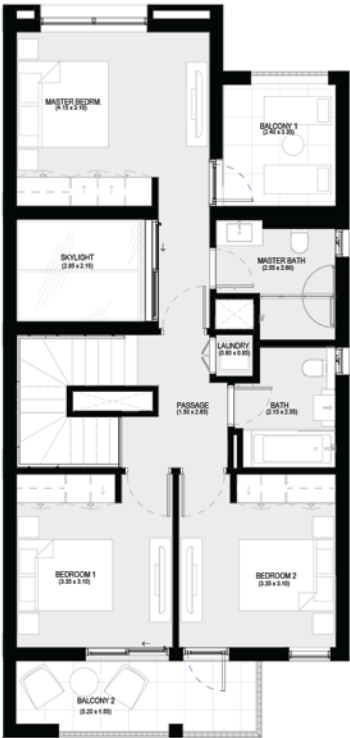
### 3 BEDROOM DUPLEX 2 - End 2

UNIT	TOTAL AREA	
1, 3, 33, 35, 84, 86, 124, 126, 142, 144, 147, 149, 179, 181	205.40 SQ.M.	2210.91 SQ.FT.

KEY PLAN



GROUND FLOOR PLAN  
(SKYLIGHT PROVIDED ABOVE DINING SPACE)



FIRST FLOOR PLAN

Disclaimer : All dimensions are in imperial and metric, and measured from finish to finish excluding construction tolerances. 2. All materials, dimensions, and drawings are approximate only. 3. Information is subject to change without notice, at developer's absolute discretion. 4. Actual area may vary from the stated area. 5. Drawings not to scale. 6. All images used are for illustrative purposes only and do not represent the actual size, features, specifications, fittings, and furnishings. 7. The developer reserves the right to make revisions / alterations, at it's absolute discretion, without any liability whatsoever.

# ARABIAN RANCHES III

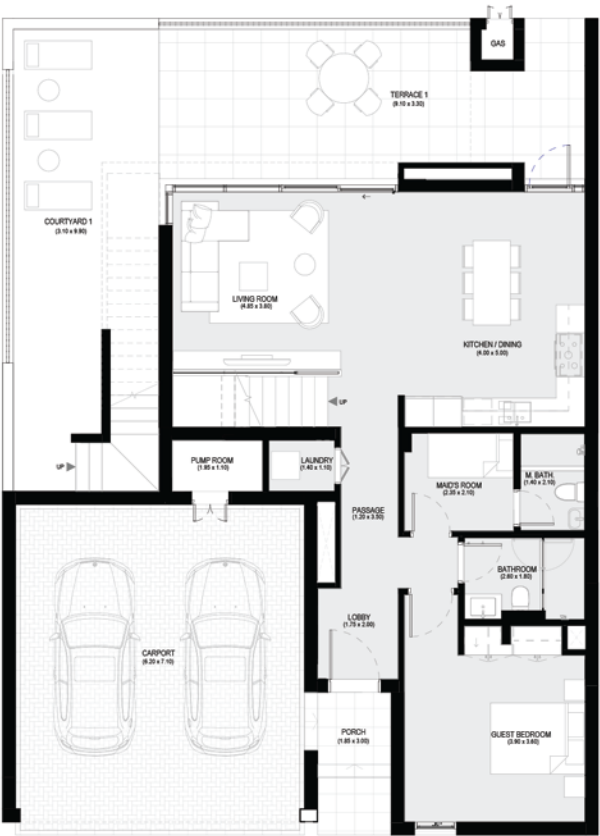
BLISS 2

CLASSIC

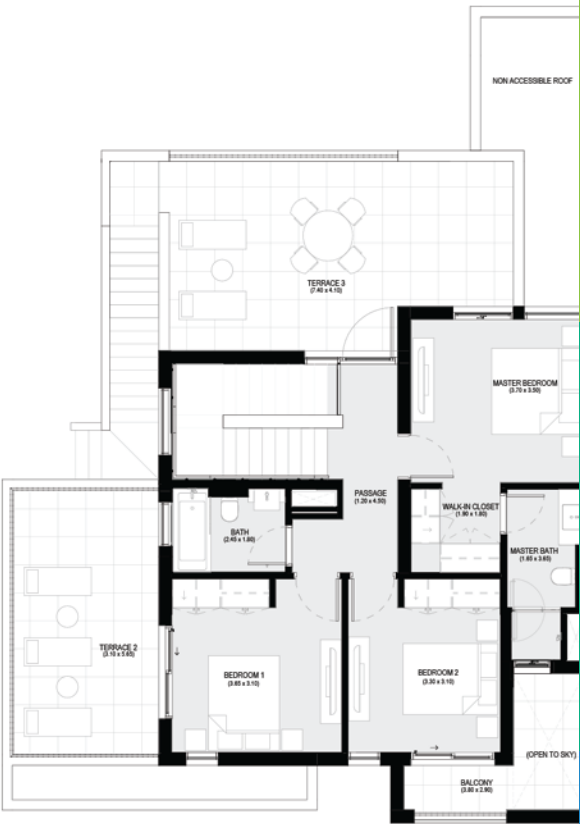
## 4 BEDROOM DUPLEX 1 - End 1

UNIT	TOTAL AREA	
127, 269	301.96 SQ.M.	3250.27 SQ.FT.

KEY PLAN



GROUND FLOOR PLAN



FIRST FLOOR PLAN

Disclaimer : All dimensions are in imperial and metric, and measured from finish to finish excluding construction tolerances. 2. All materials, dimensions, and drawings are approximate only. 3. Information is subject to change without notice, at developer's absolute discretion. 4. Actual area may vary from the stated area. 5. Drawings not to scale. 6. All images used are for illustrative purposes only and do not represent the actual size, features, specifications, fittings, and furnishings. 7. The developer reserves the right to make revisions / alterations, at it's absolute discretion, without any liability whatsoever.

# ARABIAN RANCHES III

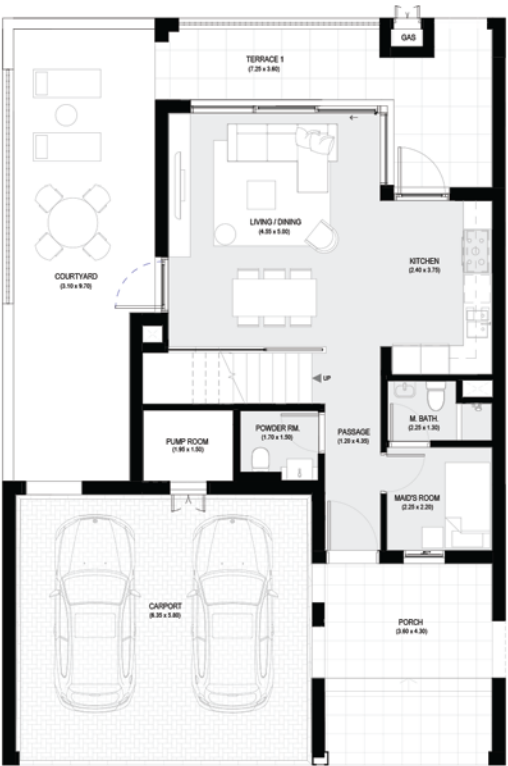
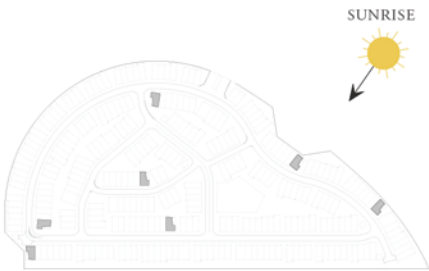
## BLISS 2

### CLASSIC

### 4 BEDROOM DUPLEX 2 - End 1

UNIT	TOTAL AREA	
10, 62, 69, 93, 150, 226, 248	274.86 SQ.M.	2958.57 SQ.FT.

KEY PLAN



GROUND FLOOR PLAN



FIRST FLOOR PLAN

Disclaimer : All dimensions are in imperial and metric, and measured from finish to finish excluding construction tolerances. 2. All materials, dimensions, and drawings are approximate only. 3. Information is subject to change without notice, at developer's absolute discretion. 4. Actual area may vary from the stated area. 5. Drawings not to scale. 6. All images used are for illustrative purposes only and do not represent the actual size, features, specifications, fittings, and furnishings. 7. The developer reserves the right to make revisions / alterations, at it's absolute discretion, without any liability whatsoever.

# ARABIAN RANCHES III

BLISS 2

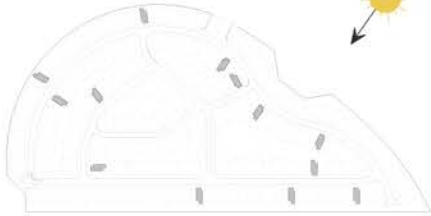
CLASSIC

## 4 BEDROOM TRIPLEX - End 1

UNIT	TOTAL AREA
15, 44, 45, 130, 141, 164, 175, 195, 203, 215, 236, 258, 266	275.12 SQ.M. 2961.37 SQ.FT.

KEY PLAN

SUNRISE



GROUND FLOOR PLAN



FIRST FLOOR PLAN



SECOND FLOOR PLAN

Disclaimer : All dimensions are in imperial and metric, and measured from finish to finish excluding construction tolerances. 2. All materials, dimensions, and drawings are approximate only. 3. Information is subject to change without notice, at developer's absolute discretion. 4. Actual area may vary from the stated area. 5. Drawings not to scale. 6. All images used are for illustrative purposes only and do not represent the actual size, features, specifications, fittings, and finishes. 7. The developer reserves the right to make any changes to the drawings without any liability.

EMAAR

# ARABIAN RANCHES III

BLISS 2

CLASSIC

## 4 BEDROOM TRIPLEX - Middle

UNIT	TOTAL AREA	
128, 129, 267, 268	278.11 SQ.M.	2907.44 SQ.FT.

KEY PLAN

SUNRISE



GROUND FLOOR PLAN



FIRST FLOOR PLAN



SECOND FLOOR PLAN

# ARABIAN RANCHES III

---

BLISS 2

FOR MORE INFORMATION PLEASE CONTACT



 +971 55 476 7630  
 +971 4 368 7878  
 [info@afsrealestate.com](mailto:info@afsrealestate.com)  
 [www.afsrealestate.com](http://www.afsrealestate.com)



 +971 50 674 2020  
 +971 4 368 7878  
 [info@dubricks.com](mailto:info@dubricks.com)  
 [www.dubricks.com](http://www.dubricks.com)

## EMAAR